

Map for Township 6 not copied

T VII . R XX III . S & E .

Land District East
Territory of Florida

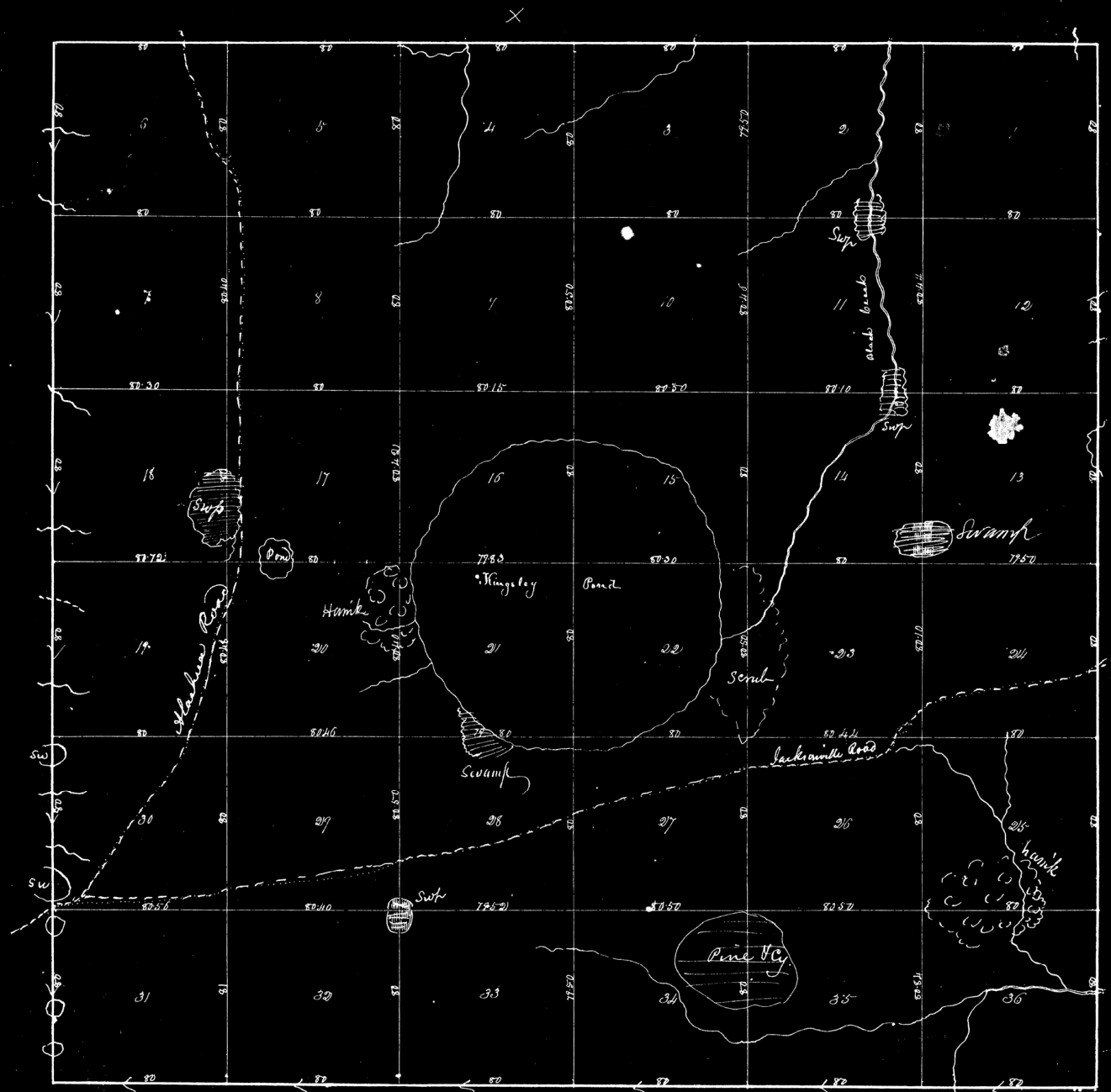


Table of Contents

No.	Acres	No.	Acres	No.	Acres
1	620.00	13	638.00	26	640.00
2	638.00	14	640.40	27	643.60
3	638.00	15	643.20	28	642.00
4	620.00	16	641.64	29	639.27
5	620.00	17	641.68	30	643.84
6	620.00	18	641.48	31	642.24
7	620.80	19	641.80	32	646.26
8	621.50	20	645.87	33	645.61
9	623.20	21	640.11	34	636.08
10	645.85	22	643.20	35	620.00
11	644.00	23	644.16	36	645.37
12	641.76	24	638.39		

6662 in Township.

Said Thomas Deft Survey
Surveyed in December 1830 & February 1831.
John H. Ellis
Henry Slaughter } and chain men
Variation 6° 10' East
Said 40 chains to an inch
Examined compared with field notes.
Approved January 1831.

James D. Jones
Cm. Gen. S. T.

Records