

T. v R. XXIV S. & E.

*Sand District East
Territory of Florida.*

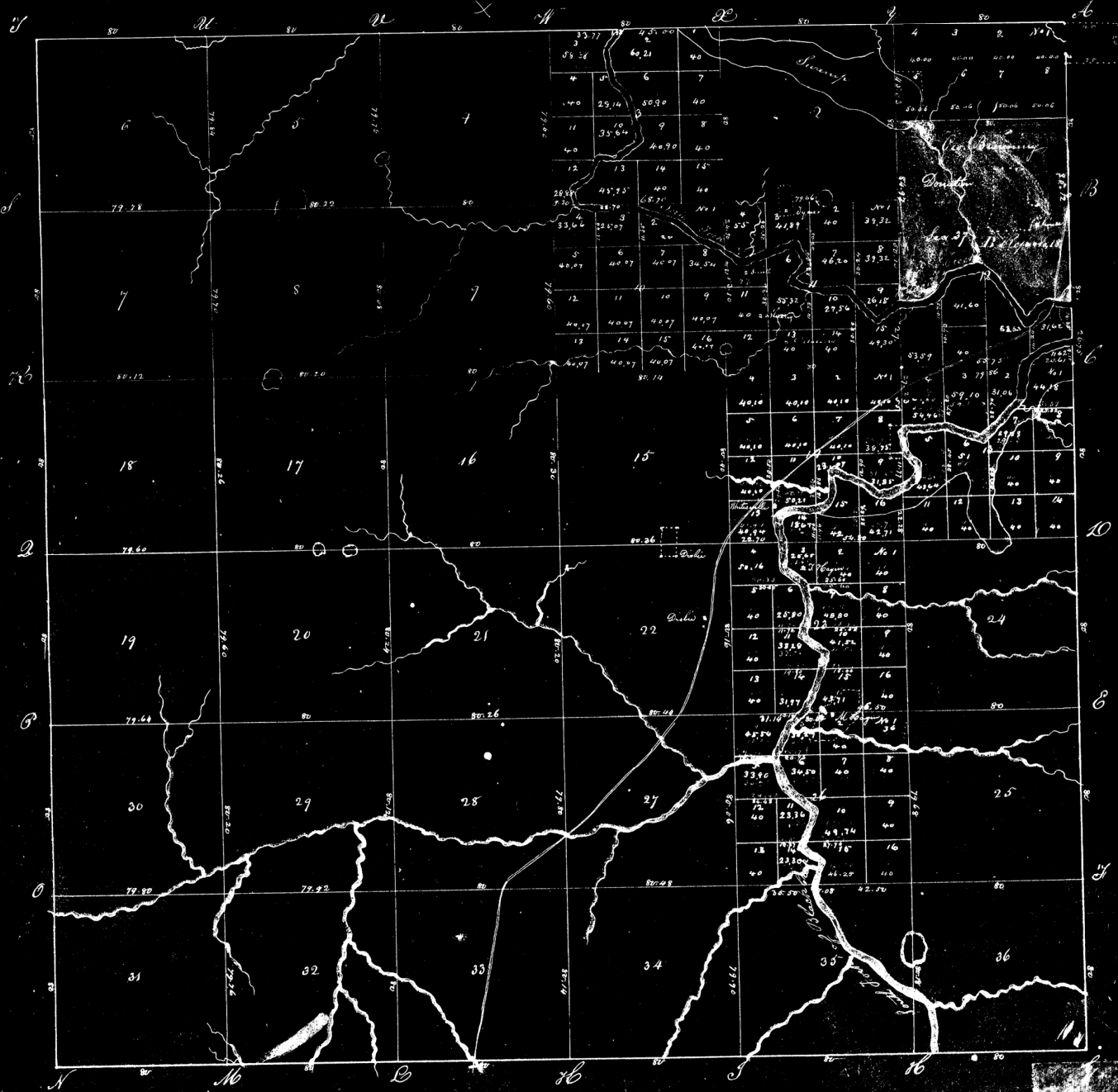


Table of Contents

No.	Acre	No.	Acre	No.	Acre
1	360.72	13	377.34	25	638.72
2	638.64	14	607.00	26	606.35
3	640.00	15	644.30	27	643.12
4	637.44	16	641.20	28	640.77
5	637.44	17	641.84	29	640.76
6	638.48	18	637.70	30	638.16
7	638.40	19	635.52	31	638.24
8	640.80	20	639.36	32	638.72
9	638.72	21	642.80	33	640.56
10	623.42	22	644.68	34	642.68
11	602.83	23	640.59	35	640.68
12	240.06	24	640.00	36	640.72
	6922.51		7576.57		7629.37
<i>Total of Public Land</i>				22168.09	
<i>Private Claims No. 37</i>				600.00	
<i>Total in Township</i>				22808.49	

*Surveyed in the 2nd quarter of 1833 by
Paul M. Cornick Depy. Surveyor
Michael Higgins } Chainmen & Markers
Isaac Barnes }
Geo. G. White }
James M. Lee } Flag Bearers
Seaborn J. Stringer }*

*Variation 5.10 East
Scale 40 Chains to the Inch*

*Examined, and compared with the Field Notes
Approved - April 1834
Richard Butler
C. W. Land O. 36.*